

**English:**

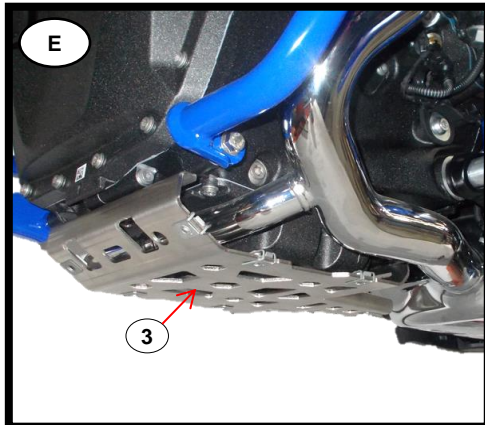
- Apply item N°2 (Stainless Steel Clip – x7) on item N°3 (Stainless Steel Clamp – x1).

**Français:**

- Appliquer l'item N°2 (Clip Inox – x7) sur l'item N°3 (Fixation Inox – x1).

**Português:**

- Aplicar o item N°2 (Mola de Friso – x7) no item N°3 (Fixação Inox – x1).



**English:**

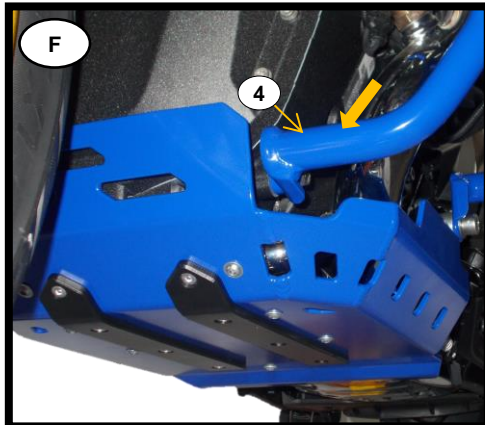
- Mount assembly previously mounted on the motorcycle with OEM screws (x4) – first rear part.

**Français:**

- Monter assemblage précédemment monté sur la moto avec les vis OEM (x4) – première partie arrière.

**Português:**

- Montar o conjunto anteriormente montado na moto com parafusos de origem (x4) – iniciar pela parte de trás.



**English:**

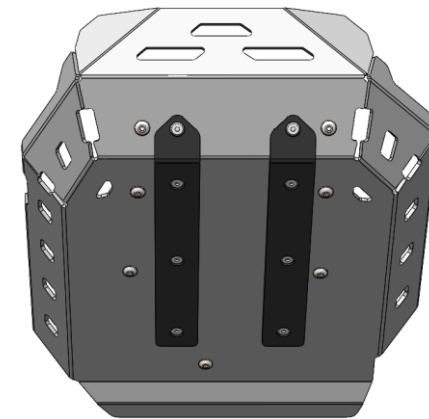
- Mount protection on the motorcycle with item N°1 (Screw – x7) and torque all screws to the correct value.

**Français:**

- Monter la protection sur la moto avec l'item N°1 (Vis – x7) et torque toutes les vis avec le bonne valeur.

**Português:**

- Montar proteção na moto com o item N°1 (Parafuso – x7) e apertar todos os parafusos com o valor correto de torque.



## ALUMINUM TRAIL ENGINE GUARD

Ref.: 2CP090098A



Assembly Booklet / Paper collection

Livret de montage / Collecte de papier

Mini Zip Bag / Plastic collection

Mini sac zip / Collecte de pastique

Box / Paper collection

Boîte / Collecte de papier

Carton Separator / Paper collection

Séparateur de cartons / Collecte de papier

Card Header / Paper collection

Carte d'en-tête / Collecte de papier

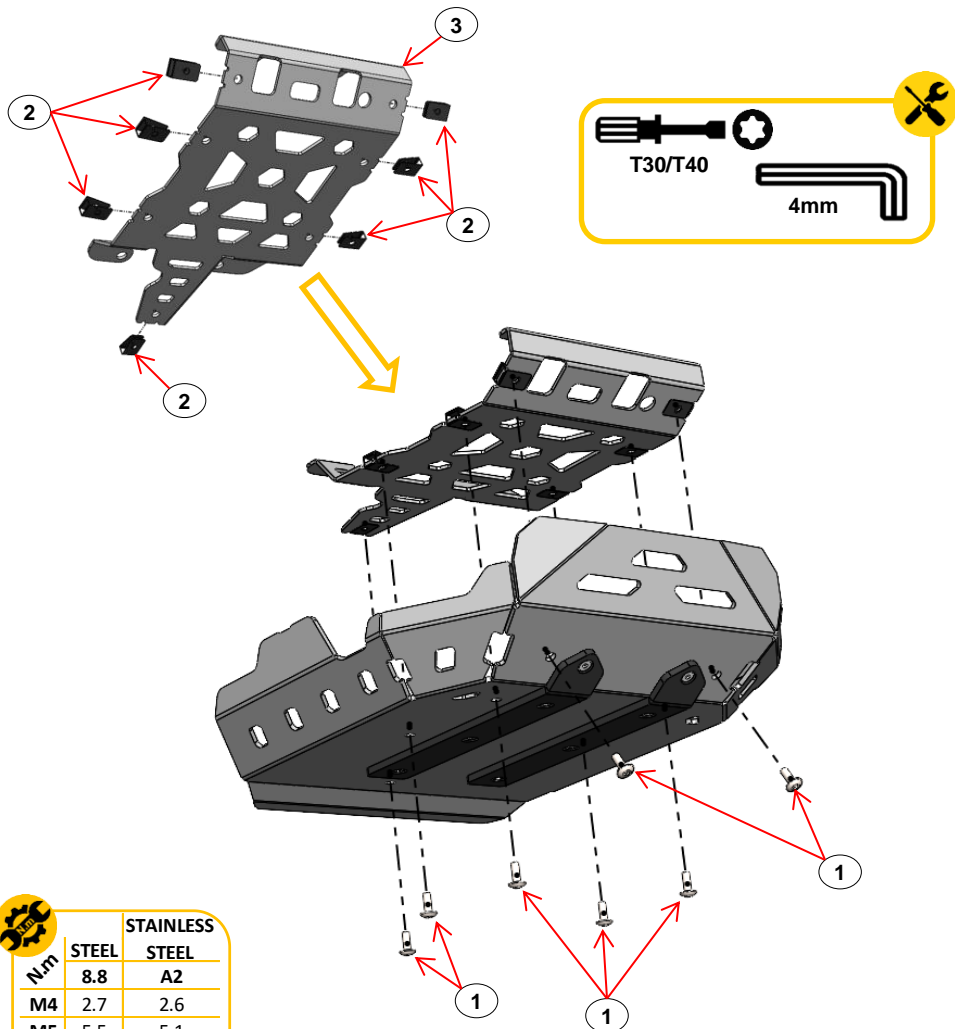
Plastic Bag Cover / Plastic collection

Couverte de sac en plastique / Collecte de plastique



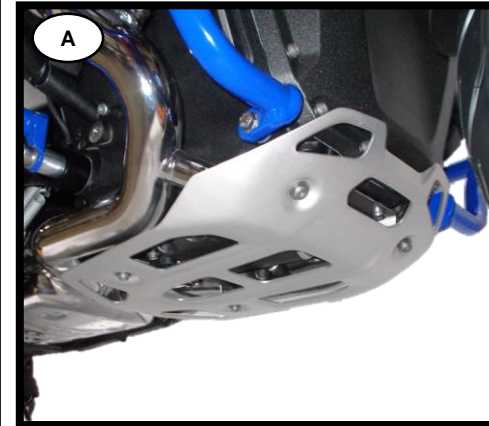
Management System  
ISO 9001:2015  
www.tuv.com  
ID: 9106077736

# ASSEMBLY INSTRUCTION / INSTRUÇÃO DE MONTAGEM

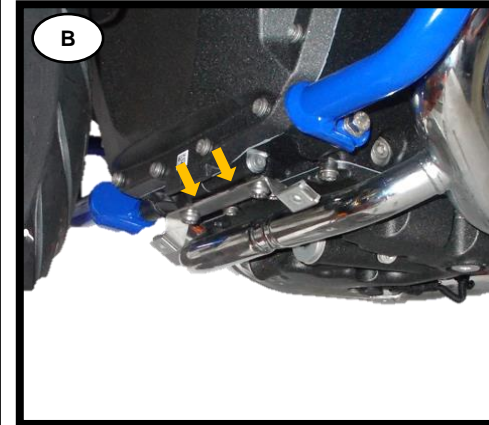


N.m	STAINLESS	
	STEEL	STEEL
M4	2.7	2.6
M5	5.5	5.1
M6	9.7	8.7
M8	23.0	21.2
M10	47.0	42.0
M12	80.0	73.0

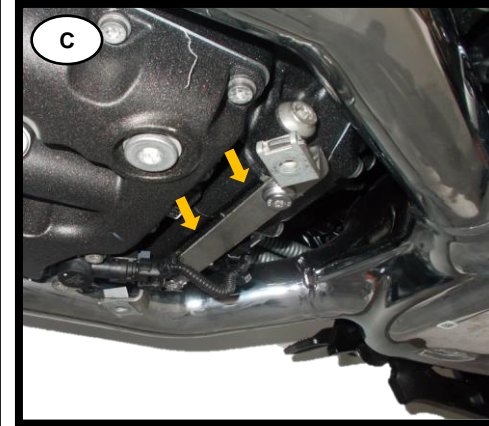
3	Fixação Inox / Stainless Steel Clamp	A98	1
2	Mola de Friso / Stainless Steel Clip	M6	7
1	Paraf. Cabeça Redonda Sext. Int. c. FA / Screw Round Head With Washer False	M6x16 - ISO 7380	7
ITEM Nº:	COMPONENTE (COMPONENT):	DESCRIÇÃO (DESCRIPTION):	QUANT.:
ACESSÓRIOS (ACCESSORIES)			



- English:**  
 • Remove OEM protection.  
**Français:**  
 • Retirer la protection OEM.  
**Português:**  
 • Remover proteção OEM.



- English:**  
 • Remove OEM clamp – front part.  
**Français:**  
 • Retirer la fixation OEM – partie avant.  
**Português:**  
 • Remover fixação OEM – parte da frente.



- English:**  
 • Remove OEM clamp – rear part.  
**Français:**  
 • Retirer la fixation OEM – partie arrière.  
**Português:**  
 • Remover fixação OEM – parte de trás.